

8
8

Tatar İjān Gāzi Giray

mahur

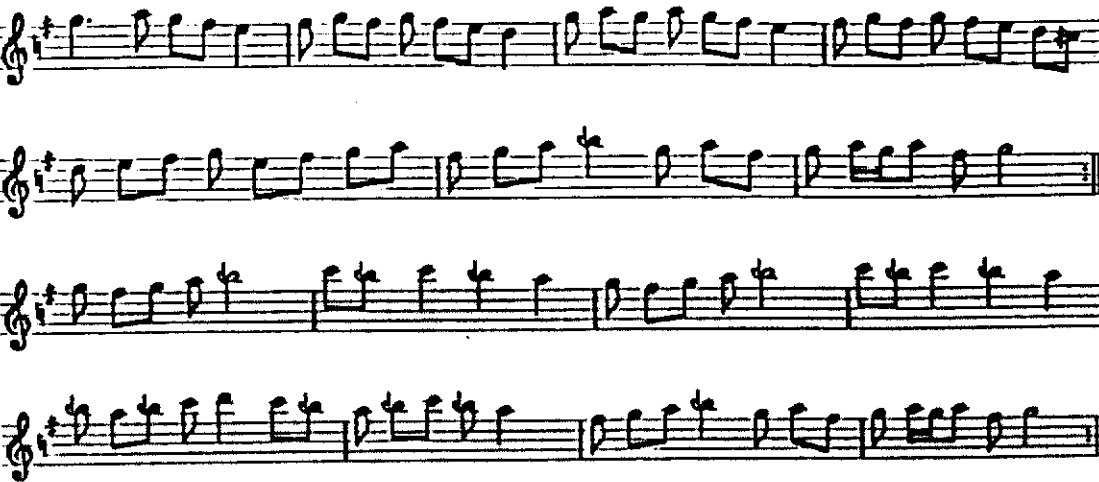
düyek

H1 a



1) M 6: the area to be repeated is separated off from the remainder by a vertical bar with, written above, *mülkerer* ('repeated').

H2 a



H3 a



1) H2: a later marginal remark laconically informs us that *hâne-i şevîi haşa'dır* ('H2 is wrong'). The grounds for this verdict are not vouchsafed, but possibly what is alluded to is the fact that H2 a echoes the latter part of the *müldzime* and might therefore be considered part of it, H2 proper consisting accordingly only of H2 b.

H3 b: another marginal remark in the same hand says *bu terkib ziyâde* ('this subsection is extra'). 3: 1-3: the original has c and B⁴ rather than c' and b⁴.

H1 b 4: 4 a.

M 16: 2 GA, 3 G.

3) Dar ül-elhan no. 42. 1 = J. Time signature 8 : 4. Tempo J = 104.